



WAYNE  
HEALTHCARE

**Wayne HealthCare  
Cancer Program Update  
05/15/2019**

**Alisha D. Reiss, MD, FACS**

**Medical Director  
Wayne HealthCare Oncology Program**



## Commission on Cancer

- Established by the American College of Surgeons (ACoS) in 1922
- A consortium of professional organizations dedicated to improving survival and quality of life for cancer patients
- Sets standards to ensure quality, multidisciplinary, and comprehensive cancer care delivery in health care settings
- Conducts surveys to assess compliance with those standards
- Collects standardized data to measure cancer care quality
- Uses data to monitor treatment patterns and outcomes and enhance cancer control and clinical surveillance activities
- Develops educational interventions to improve cancer prevention, early detection, cancer-care delivery, and outcomes

# Commission on Cancer: The Value of Accreditation

- Demonstrates commitment to patients, communities, providers, payers, and policymakers to improving survival and quality of life for patients and to evidence-based, organized, comprehensive, and quality cancer care
- Standards **ensure** that state-of-the-art clinical services for diagnosing, treating, rehabilitating, and supporting cancer patients and their families are available to provide **quality care**
- **National Cancer Data Base** participation by cancer registries captures more than 100 data elements for every patient and more than 70% of all new cancer patients diagnosed in the U.S. each year. Participant User File (PUF) access for research is only available to investigators at CoC-approved programs
- **Measuring quality and outcomes**, including overall survival, through a rapidly expanding panel of quality measures for cancers of the breast, colon, rectum, lung, esophagus, and stomach, and soon to include gynecologic and urologic malignancies, melanoma, sarcoma and pediatric tumors. Comparison with nation-wide data from all 1,500 CoC-accredited programs
- **Ensures a multidisciplinary team approach** including information and access to clinical trials, access to prevention and early detection programs, cancer conferences, and oversight by a Cancer Committee



**Wayne HealthCare  
Cancer Program Update  
05/15/2019**

▶ **Accreditation Survey Process:**

- ▶ Cancer program surveys are a comprehensive evaluation of the entire scope, organization, and activity of a cancer program.
- ▶ A survey is performed every three years by a Commission on Cancer (CoC) surveyor who is trained to evaluate compliance with the CoC eligibility requirements and standards that are required for accreditation.
- ▶ Currently, accreditation awards are based on compliance with 34 standards.

# CQIP

Cancer Quality Improvement Program

Wayne HealthCare

Greenville, OH

Annual  
Report  
2019

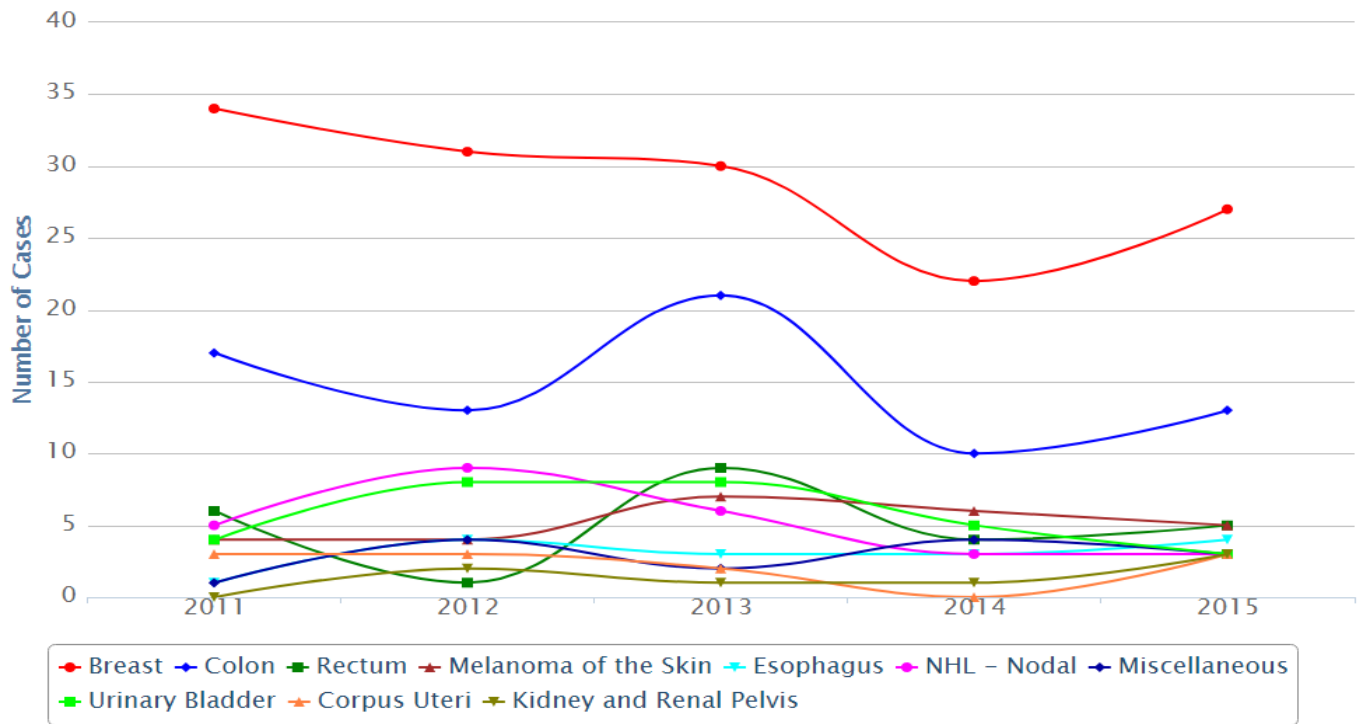


# Cancer Quality Improvement Program (CQIP)

- A data-driven, process and outcomes-based cancer quality improvement initiative
- Confidentially reports to 1,500 individual CoC-accredited hospitals their data as entered in NCDB (including comparisons with national data from all CoC-accredited programs)
- 2017 release provides CoC-accredited facilities with data on:
  - Compliance with CoC-adopted quality measures
  - Volume data for complex surgical oncology operations with 30-day and 90 day mortality
  - Unadjusted and risk-adjusted survival data for selected cancer sites
  - Other clinical data and administrative data, which will be updated and expanded annually



# Cancer Program Total Case Volume, 2011 - 2015 My Facility



If Miscellaneous appears in your graph, note that this is a SEER-defined group. The exact primary sites and histologies included in this group may be found in the CQIP documentation



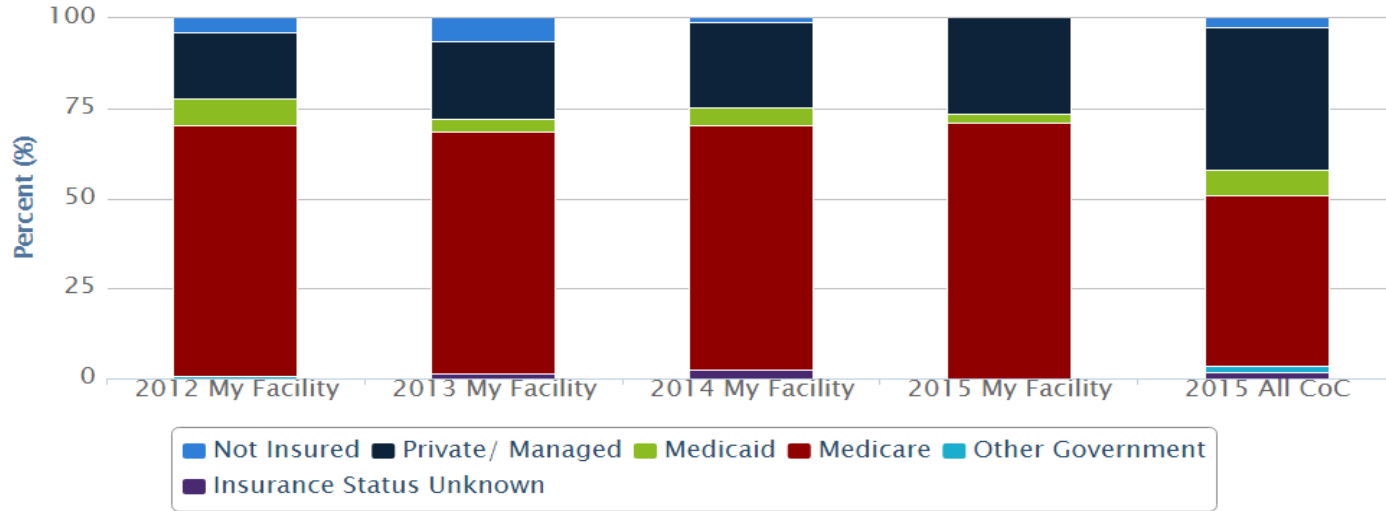
# Cancer Program Total Case Volume, 2011 - 2015

## My Facility

	<b>2011</b>	<b>2012</b>	<b>2013</b>	<b>2014</b>	<b>2015</b>
<b>Breast</b>	34	31	30	22	27
<b>Colon</b>	17	13	21	10	13
<b>Rectum</b>	6	1	9	4	5
<b>Melanoma of the Skin</b>	4	4	7	6	5
<b>Esophagus</b>	1	4	3	3	4
<b>NHL - Nodal</b>	5	9	6	3	3
<b>Miscellaneous</b>	1	4	2	4	3
<b>Urinary Bladder</b>	4	8	8	5	3
<b>Corpus Uteri</b>	3	3	2	0	3
<b>Kidney and Renal Pelvis</b>	0	2	1	1	3
<b>All Other Sites</b>	36	52	54	26	14
<b>TOTAL</b>	111	131	143	84	83

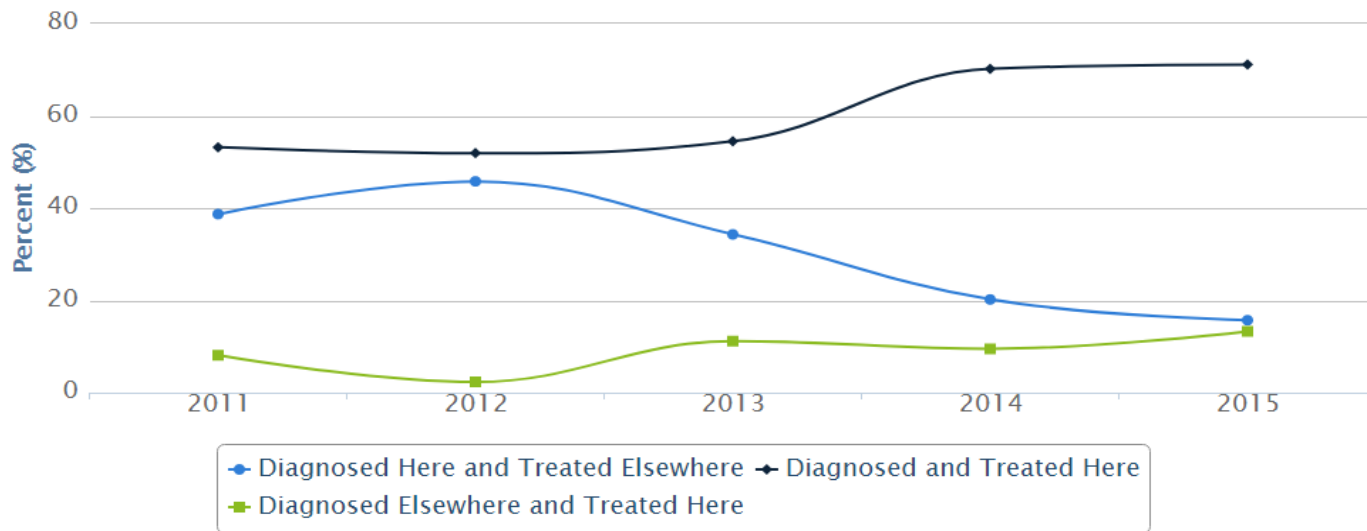
If Miscellaneous appears in your table, note that this is a SEER-defined group. The exact primary sites and histologies included in this group may be found in the CQIP documentation

# Insurance Status, 2012 - 2015 - My Facility vs. All CoC



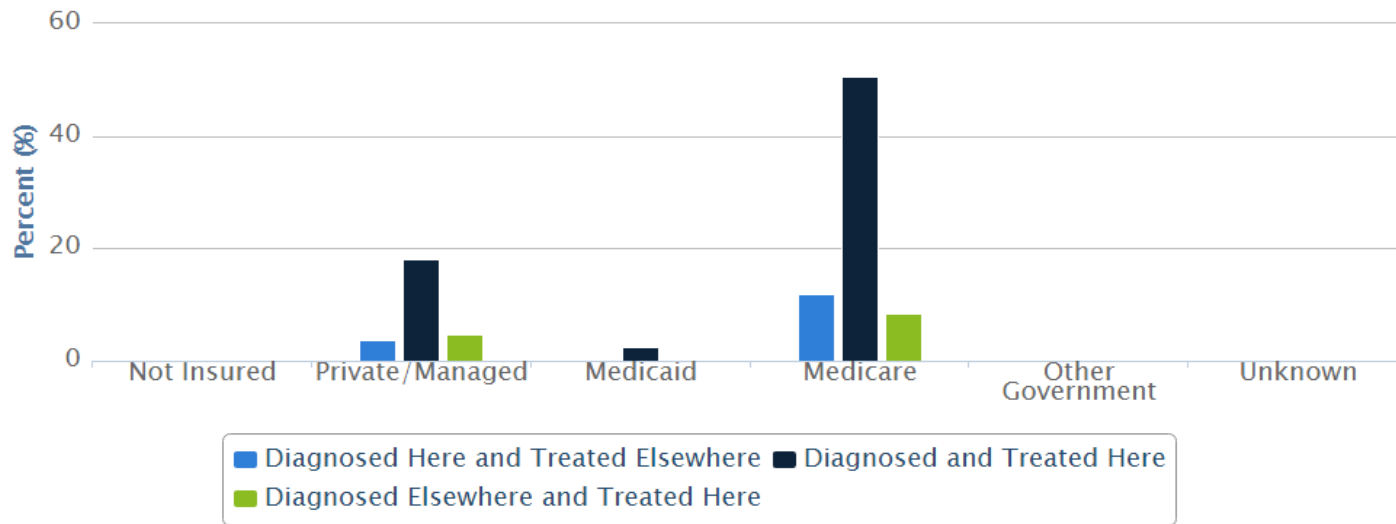
	2012 My Facility	2013 My Facility	2014 My Facility	2015 My Facility	2015 All CoC
<b>Not Insured</b>	3.8 % (n=5)	6.3 % (n=9)	1.2 % (n=1)	0 % (n=0)	2.4 % (n=28623)
<b>Private/ Managed</b>	18.3 % (n=24)	21.7 % (n=31)	23.8 % (n=20)	26.5 % (n=22)	39.6 % (n=477607)
<b>Medicaid</b>	7.6 % (n=10)	3.5 % (n=5)	4.8 % (n=4)	2.4 % (n=2)	7.1 % (n=85703)
<b>Medicare</b>	69.5 % (n=91)	67.1 % (n=96)	67.9 % (n=57)	71.1 % (n=59)	47.4 % (n=571444)
<b>Other Government</b>	0.8 % (n=1)	0 % (n=0)	0 % (n=0)	0 % (n=0)	1.5 % (n=18320)
<b>Insurance Status Unknown</b>	0 % (n=0)	1.4 % (n=2)	2.4 % (n=2)	0 % (n=0)	1.9 % (n=22968)

## Total In/Out Migration, 2011 - 2015 - My Facility



	2011	2012	2013	2014	2015
<b>Diagnosed Here and Treated Elsewhere</b>	38.7 % (n=43)	45.8 % (n=60)	34.3 % (n=49)	20.2 % (n=17)	15.7 % (n=13)
<b>Diagnosed and Treated Here</b>	53.2 % (n=59)	51.9 % (n=68)	54.5 % (n=78)	70.2 % (n=59)	71.1 % (n=59)
<b>Diagnosed Elsewhere and Treated Here</b>	8.1 % (n=9)	2.3 % (n=3)	11.2 % (n=16)	9.5 % (n=8)	13.3 % (n=11)

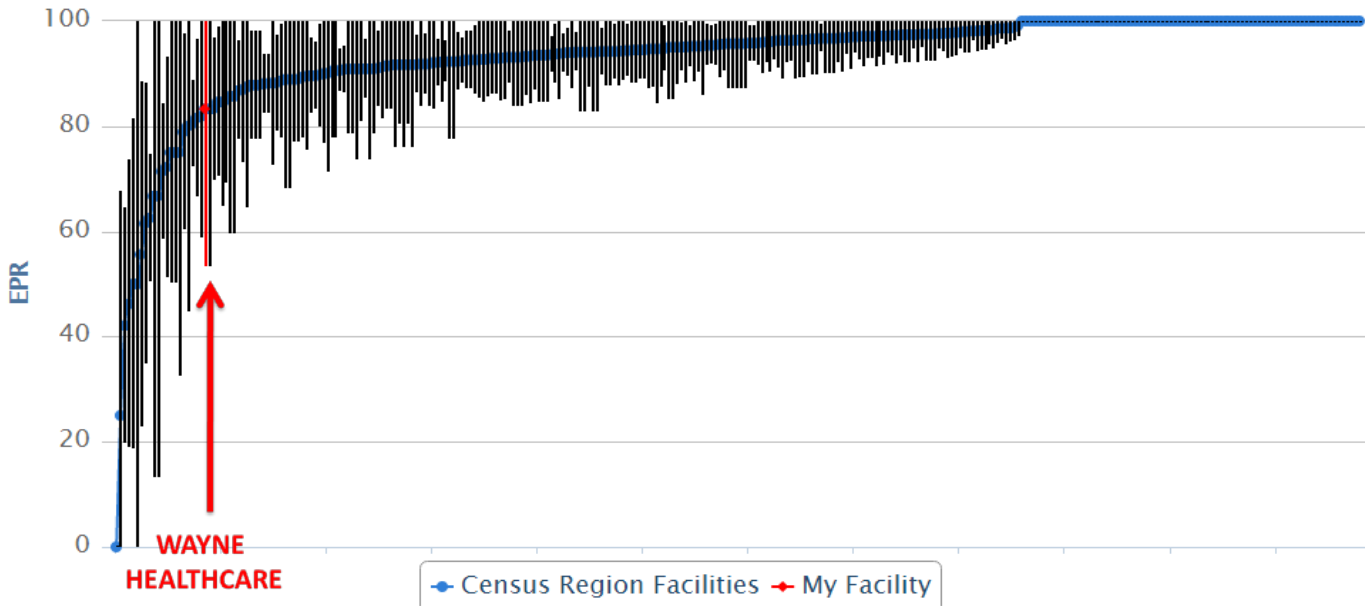
# In/Out Migration by Insurance Status, 2015 - My Facility



	Not Insured	Private/Managed	Medicaid	Medicare	Other Government	Unknown
<b>Diagnosed Here and Treated Elsewhere</b>	0 % (n=0)	3.6 % (n=3)	0 % (n=0)	12 % (n=10)	0 % (n=0)	0 % (n=0)
<b>Diagnosed and Treated Here</b>	0 % (n=0)	18.1 % (n=15)	2.4 % (n=2)	50.6 % (n=42)	0 % (n=0)	0 % (n=0)
<b>Diagnosed Elsewhere and Treated Here</b>	0 % (n=0)	4.8 % (n=4)	0 % (n=0)	8.4 % (n=7)	0 % (n=0)	0 % (n=0)

# Quality Measure - Breast Cancer

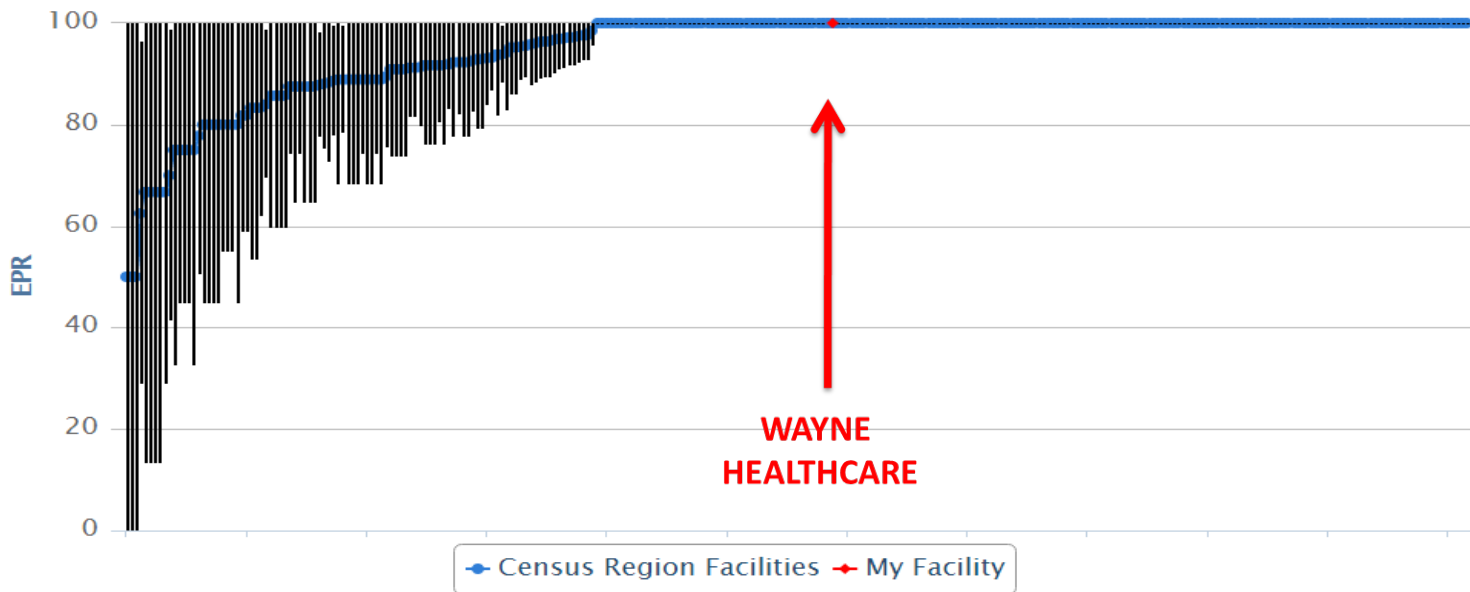
# BREAST: Breast radiation after breast conserving surgery



	My Program	My State (OH)	My Census Region (East North Central)	My ACS Division (East Central)	My CoC Program Type (CCP)	All CoC Programs
<b>Performance Rate</b>	83.3 %	93.1 %	94.1 %	93.9 %	89.7 %	92 %
<b>Denominator</b>	6	2692	9993	5744	5164	56406
<b>95 % CI</b>	(53.5,100.0)	(92.1,94.1)	(93.6,94.6)	(93.3,94.5)	(88.9,90.5)	(91.8,92.2)

Radiation therapy is administered within 1 year (365 days) of diagnosis for women under age 70 receiving breast conserving surgery for breast cancer. (CP3R data as of 02/15/2018)

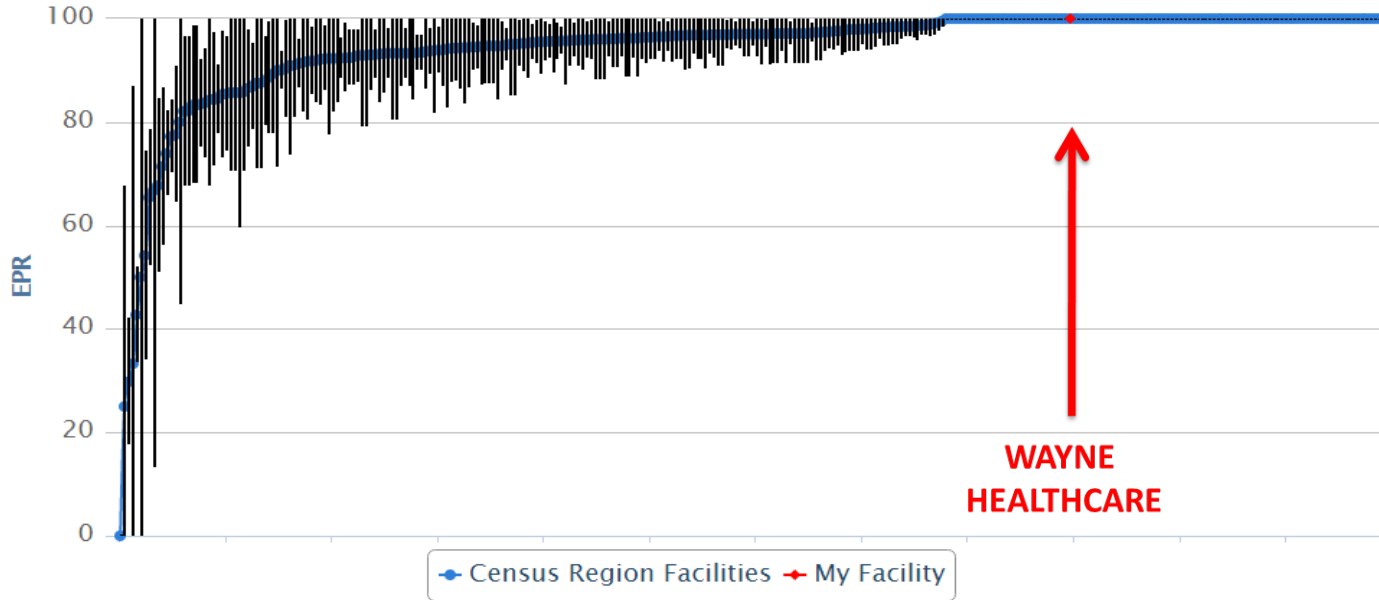
# BREAST: Combination chemotherapy for hormone receptor negative breast cancer



	My Program	My State (OH)	My Census Region (East North Central)	My ACS Division (East Central)	My CoC Program Type (CCP)	All CoC Programs
<b>Performance Rate</b>	100 %	94.7 %	94.8 %	94.7 %	92.9 %	93.1 %
<b>Denominator</b>	1	608	2114	1179	1002	12206
<b>95 % CI</b>	(100.0,100.0)	(92.9,96.5)	(93.9,95.7)	(93.4,96.0)	(91.3,94.5)	(92.7,93.5)

Combination chemotherapy is recommended or administered within 4 months (120 days) of diagnosis for women under 70 with AJCC T1cN0M0, or Stage II or III hormone receptor negative breast cancer. (CP3R data as of 02/15/2018)

# BREAST: Adjuvant hormonal therapy for hormone receptor positive breast cancer



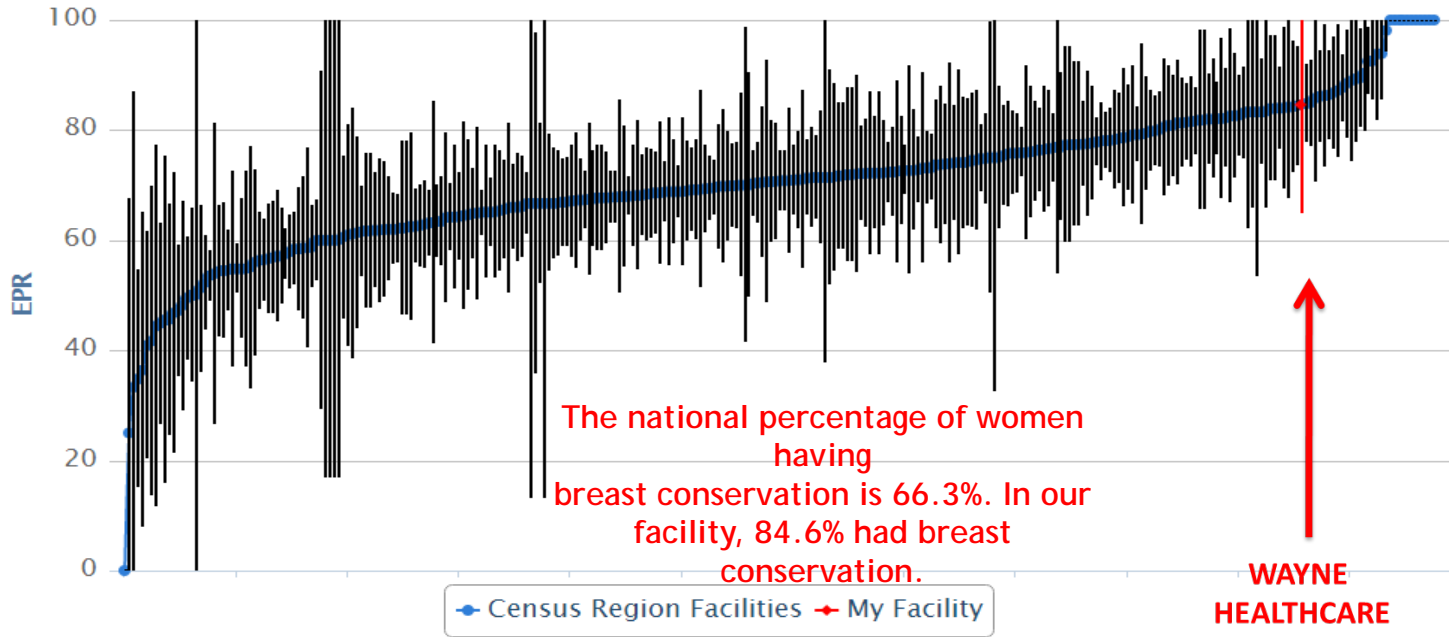
**WAYNE  
HEALTHCARE**

	My Program	My State (OH)	My Census Region (East North Central)	My ACS Division (East Central)	My CoC Program Type (CCP)	All CoC Programs
<b>Performance Rate</b>	100 %	95 %	94.8 %	95.5 %	90.9 %	92.7 %
<b>Denominator</b>	8	3599	12958	7321	6628	75406
<b>95 % CI</b>	(100.0,100.0)	(94.3,95.7)	(94.4,95.2)	(95.0,96.0)	(90.2,91.6)	(92.5,92.9)

Tamoxifen or third generation Aromatase inhibitor is recommended or administered within 1 year (365 days) of diagnosis for women with AJCC T1cN0M0, or stage IB - III hormone receptor positive breast cancer. (CP3R data as of 02/15/2018)



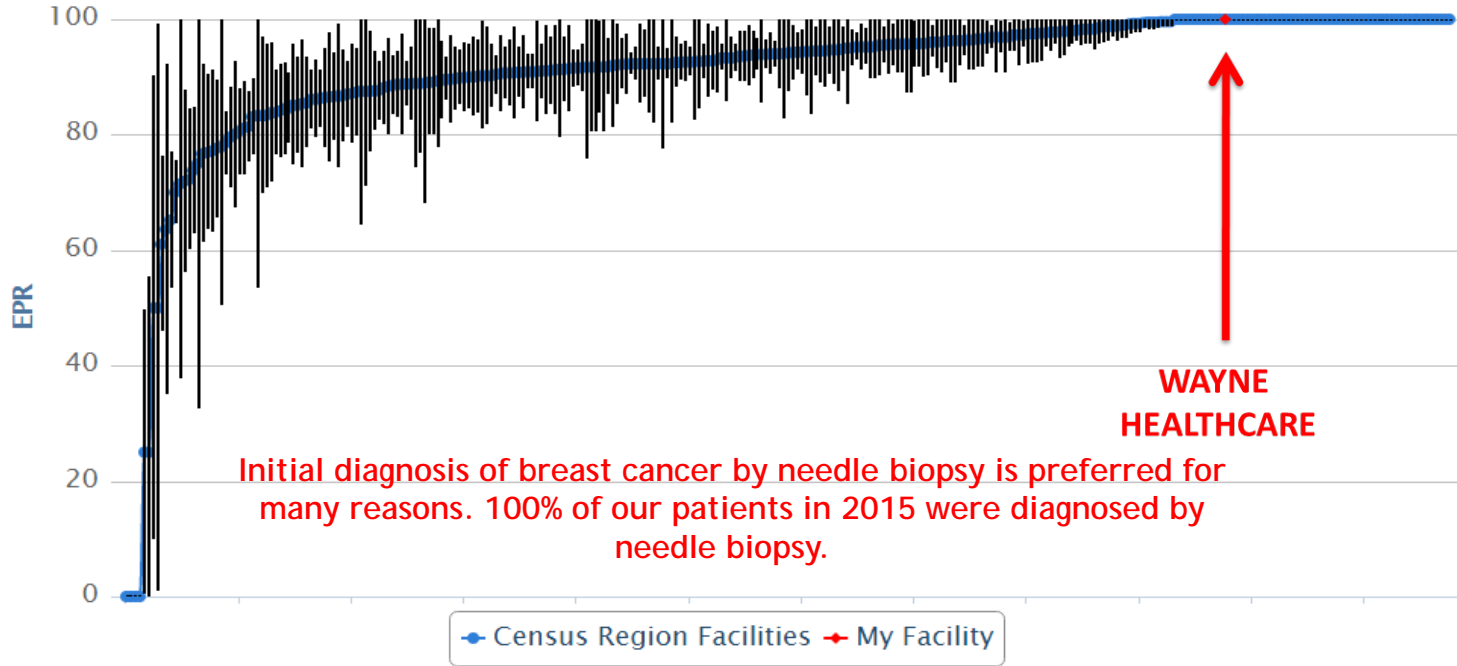
# BREAST: Breast conserving surgery rate



	My Program	My State (OH)	My Census Region (East North Central)	My ACS Division (East Central)	My CoC Program Type (CCP)	All CoC Programs
<b>Performance Rate</b>	84.6 %	68 %	68.8 %	70.4 %	70.9 %	66.3 %
<b>Denominator</b>	13	5857	21561	11930	9976	120278
<b>95 % CI</b>	(65.0,100.0)	(66.8,69.2)	(68.2,69.4)	(69.6,71.2)	(70.0,71.8)	(66.0,66.6)

Breast conservation surgery rate for women with AJCC clinical stage 0, I, or II breast cancer. (CP3R data as of 02/15/2018)

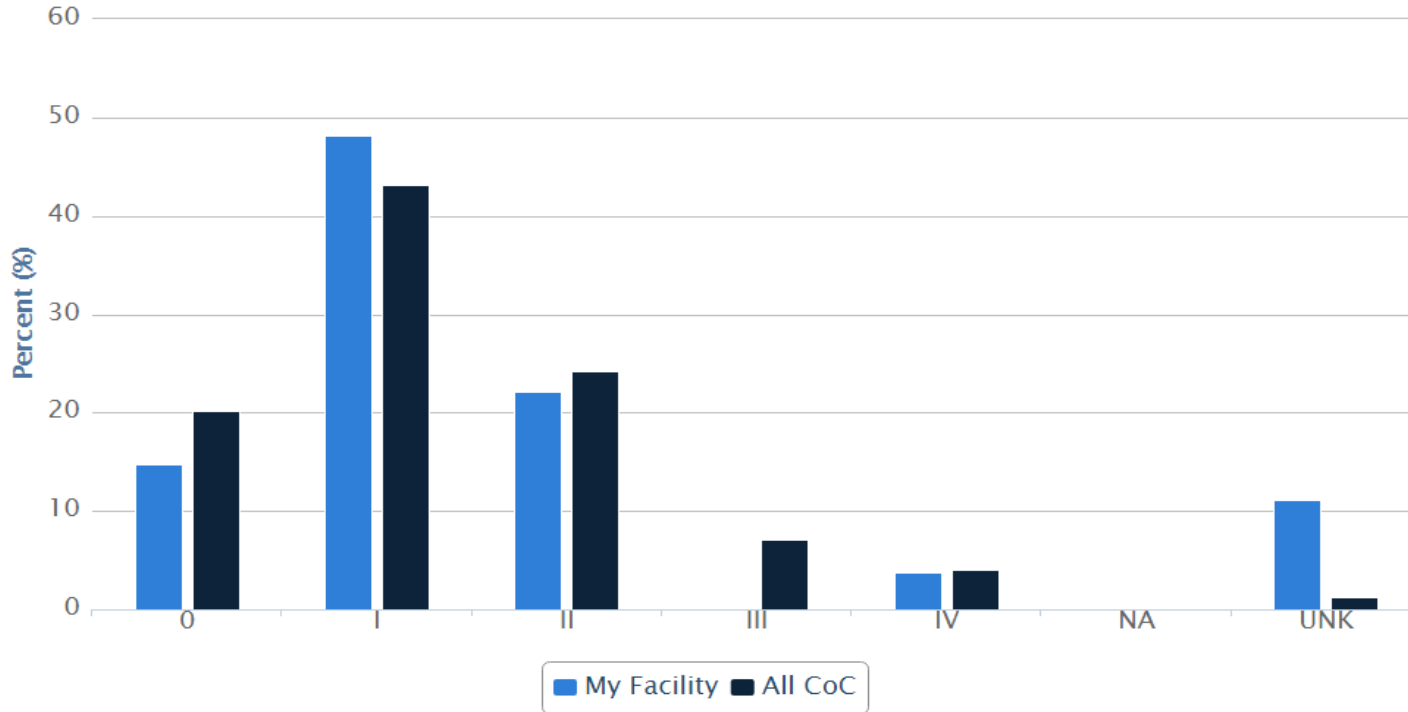
# BREAST: Image or palpation-guided needle biopsy (core or FNA) is performed for the diagnosis of breast cancer



	My Program	My State (OH)	My Census Region (East North Central)	My ACS Division (East Central)	My CoC Program Type (CCP)	All CoC Programs
<b>Performance Rate</b>	100 %	90.1 %	92.7 %	91.8 %	91.3 %	92.1 %
<b>Denominator</b>	18	6778	25358	13964	12390	126429
<b>95 % CI</b>	(100.0,100.0)	(89.4,90.8)	(92.4,93.0)	(91.3,92.3)	(90.8,91.8)	(92.0,92.2)

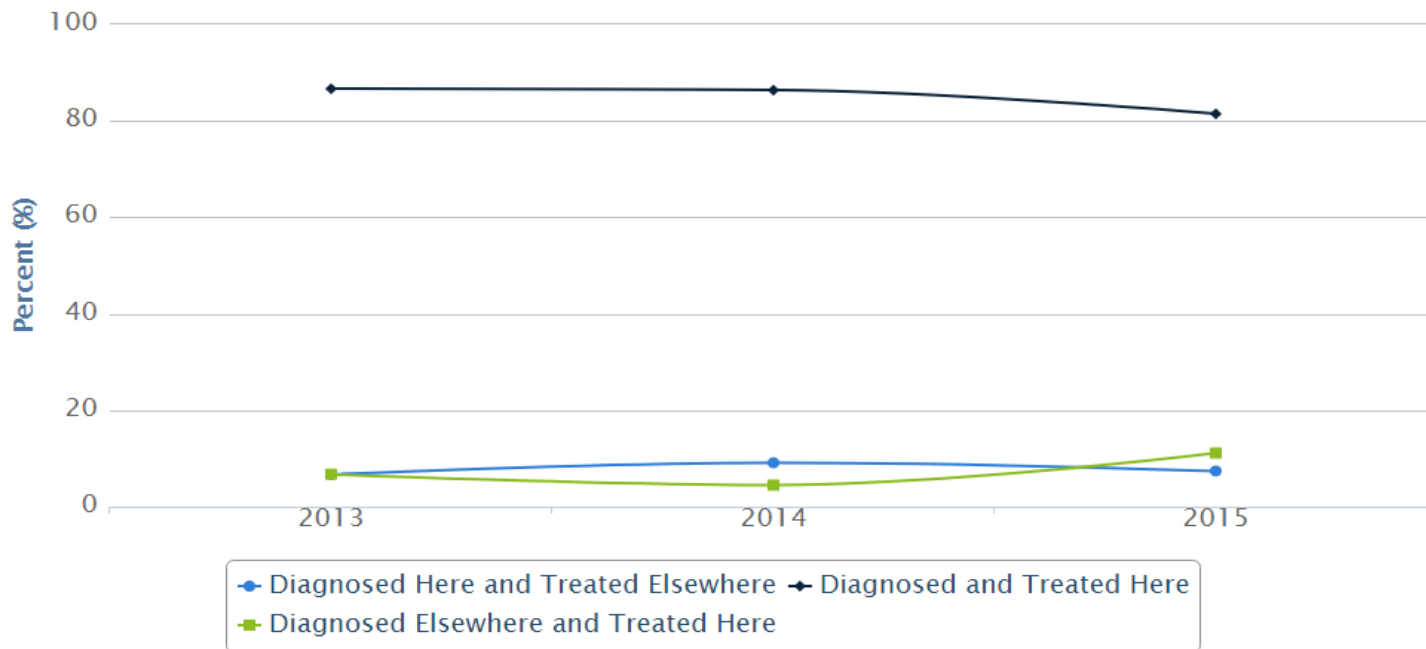
Image or palpation-guided needle biopsy (core or FNA) is performed to establish diagnosis of breast cancer. (CP3R data as of 02/15/2018)

# Stage Distribution - Breast Cancer Diagnosed in 2015, My Facility vs. All CoC



	0	I	II	III	IV	NA	UNK
My Facility	14.8 % (n=4)	48.1 % (n=13)	22.2 % (n=6)	0 % (n=0)	3.7 % (n=1)	0 % (n=0)	11.1 % (n=3)
All CoC	20.2 % (n=45157)	43.2 % (n=96465)	24.2 % (n=53986)	7.1 % (n=15796)	4 % (n=9001)	0.1 % (n=171)	1.3 % (n=2922)

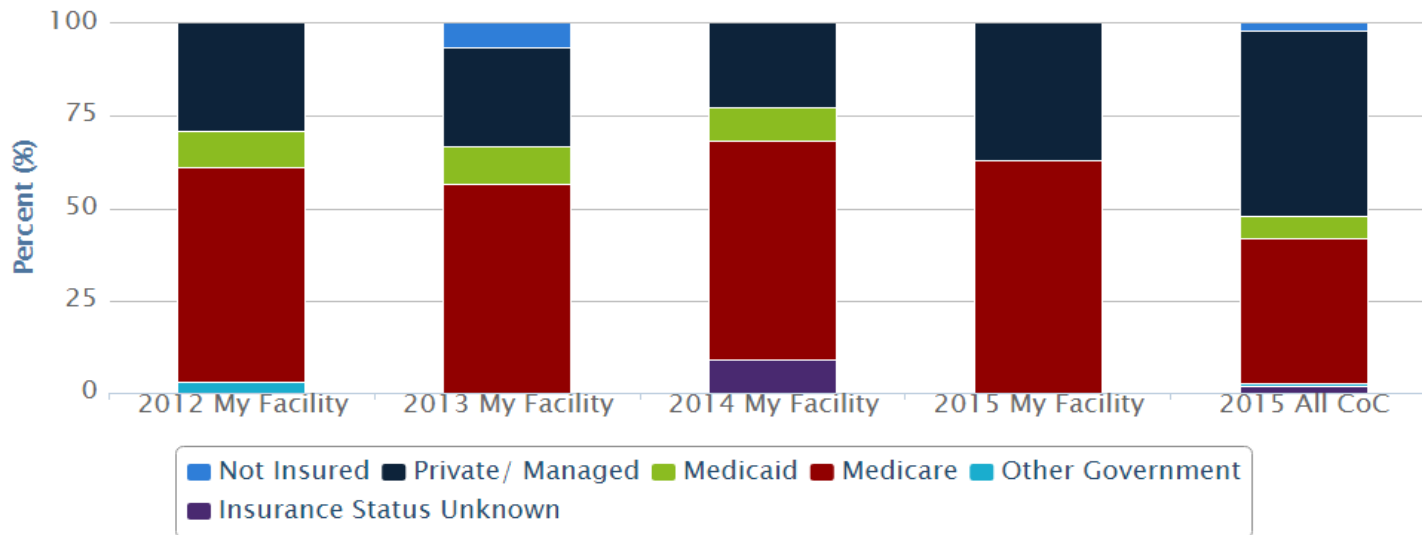
# In/Out Migration Breast Cancer, 2013 - 2015 - My Facility



	2013	2014	2015
<b>Diagnosed Here and Treated Elsewhere</b>	6.7 % (n=2)	9.1 % (n=2)	7.4 % (n=2)
<b>Diagnosed and Treated Here</b>	86.7 % (n=26)	86.4 % (n=19)	81.5 % (n=22)
<b>Diagnosed Elsewhere and Treated Here</b>	6.7 % (n=2)	4.5 % (n=1)	11.1 % (n=3)

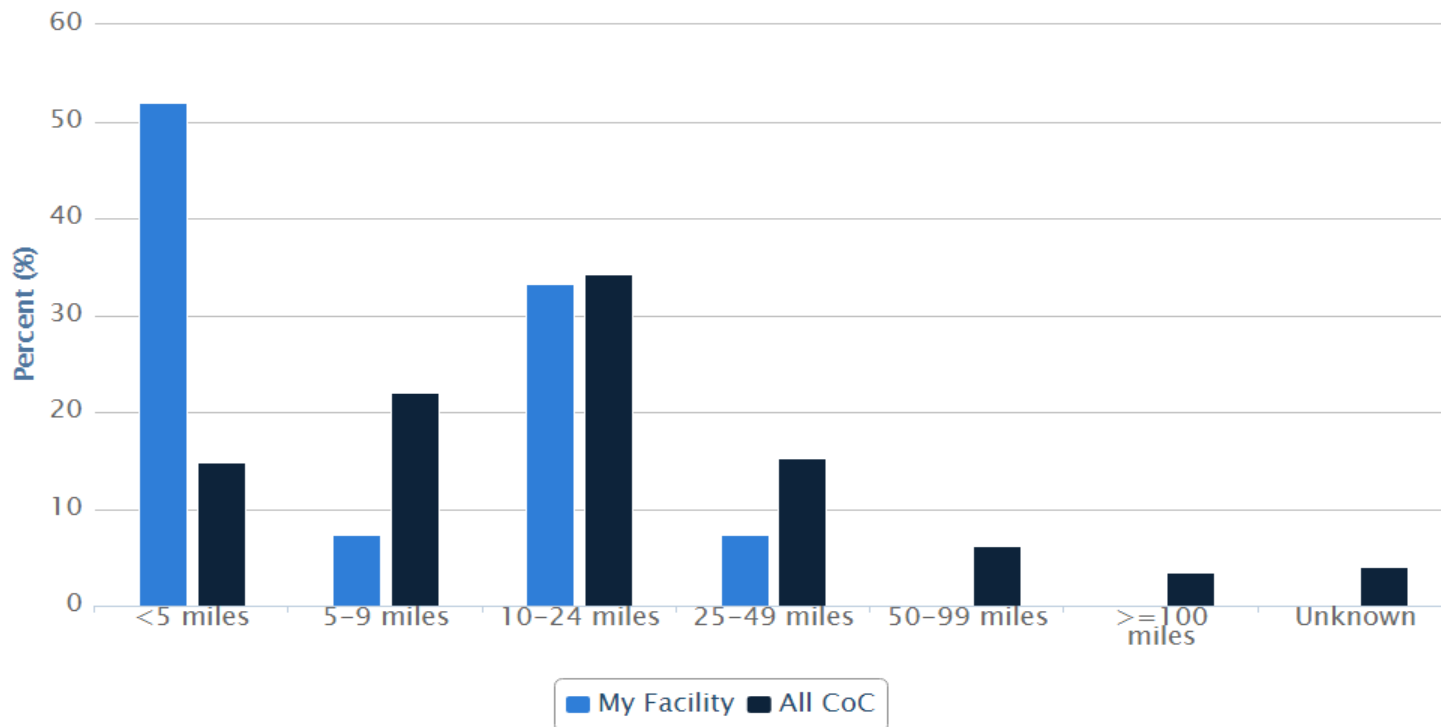
# Insurance Status - Breast Cancer, 2012 - 2015

## My Facility vs. All CoC



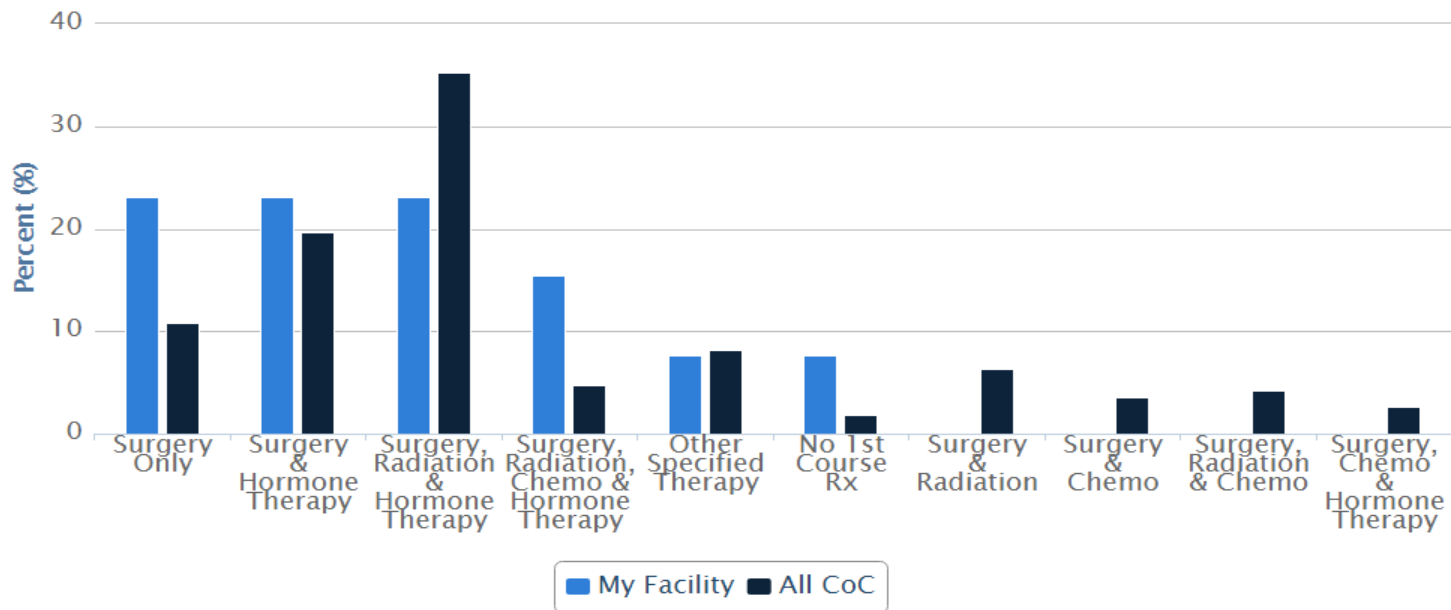
	2012 My Facility	2013 My Facility	2014 My Facility	2015 My Facility	2015 All CoC
<b>Not Insured</b>	0 % (n=0)	6.7 % (n=2)	0 % (n=0)	0 % (n=0)	1.7 % (n=3755)
<b>Private/ Managed</b>	29 % (n=9)	26.7 % (n=8)	22.7 % (n=5)	37 % (n=10)	50.2 % (n=112144)
<b>Medicaid</b>	9.7 % (n=3)	10 % (n=3)	9.1 % (n=2)	0 % (n=0)	6.3 % (n=14184)
<b>Medicare</b>	58.1 % (n=18)	56.7 % (n=17)	59.1 % (n=13)	63 % (n=17)	39 % (n=87107)
<b>Other Government</b>	3.2 % (n=1)	0 % (n=0)	0 % (n=0)	0 % (n=0)	1.1 % (n=2442)
<b>Insurance Status Unknown</b>	0 % (n=0)	0 % (n=0)	9.1 % (n=2)	0 % (n=0)	1.7 % (n=3866)

## Distance Traveled - Breast Cancer, 2015 - My Facility



	<5 miles	5-9 miles	10-24 miles	25-49 miles	50-99 miles	>=100 miles	Unknown
<b>My Facility</b>	51.9 % (n=14)	7.4 % (n=2)	33.3 % (n=9)	7.4 % (n=2)	0 % (n=0)	0 % (n=0)	0 % (n=0)
<b>All CoC</b>	14.8 % (n=33133)	22 % (n=49270)	34.2 % (n=76400)	15.2 % (n=34022)	6.2 % (n=13807)	3.4 % (n=7665)	4.1 % (n=9201)

# First Course Treatment Stage I Breast Cancer My Facility vs. All CoC

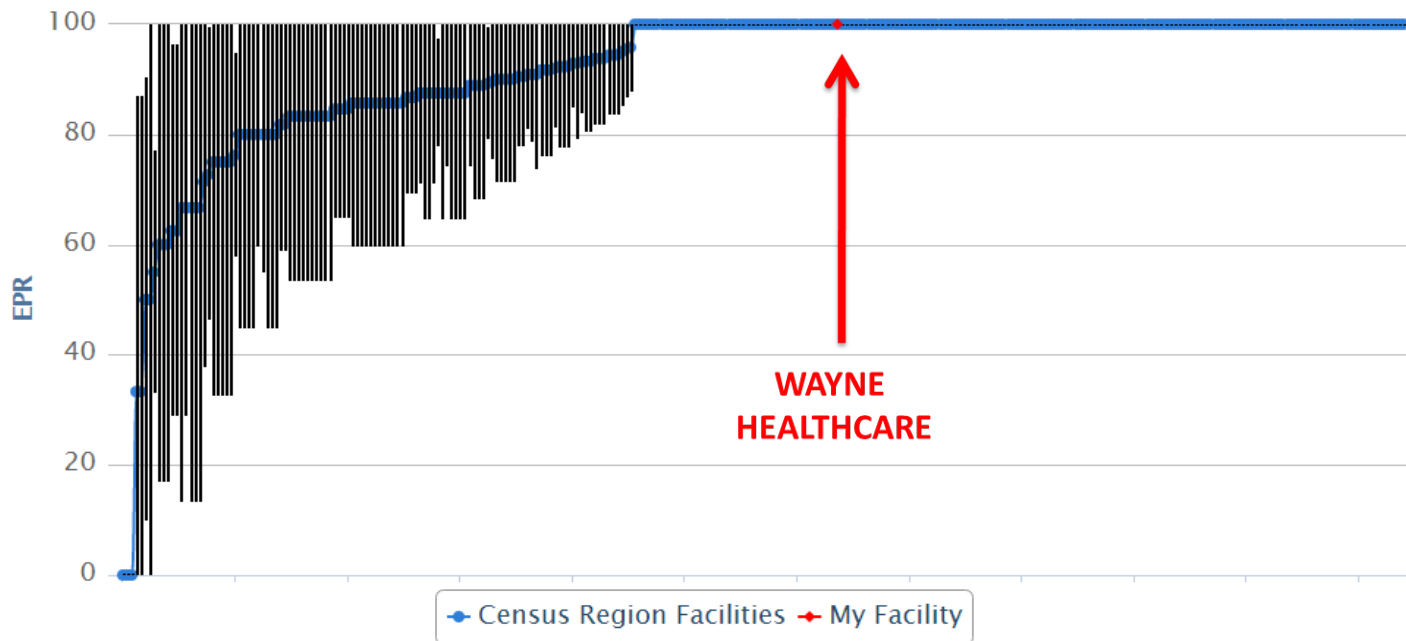


	Surgery Only	Surgery & Hormone Therapy	Surgery, Radiation & Hormone Therapy	Surgery, Radiation, Chemo & Hormone Therapy	Other Specified Therapy	No 1st Course Rx	Surgery & Radiation	Surgery & Chemo	Surgery, Radiation & Chemo	Surgery, Chemo & Hormone Therapy
<b>My Facility</b>	23.1 % (n=3)	23.1 % (n=3)	23.1 % (n=3)	15.4 % (n=2)	7.7 % (n=1)	7.7 % (n=1)	0 % (n=0)	0 % (n=0)	0 % (n=0)	0 % (n=0)
<b>All CoC</b>	10.8 % (n=10384)	19.7 % (n=19032)	35.3 % (n=34023)	4.8 % (n=4622)	8.2 % (n=7925)	1.8 % (n=1765)	6.3 % (n=6106)	3.5 % (n=3346)	4.2 % (n=4096)	2.6 % (n=2503)

# Quality Measure Reports - Colon



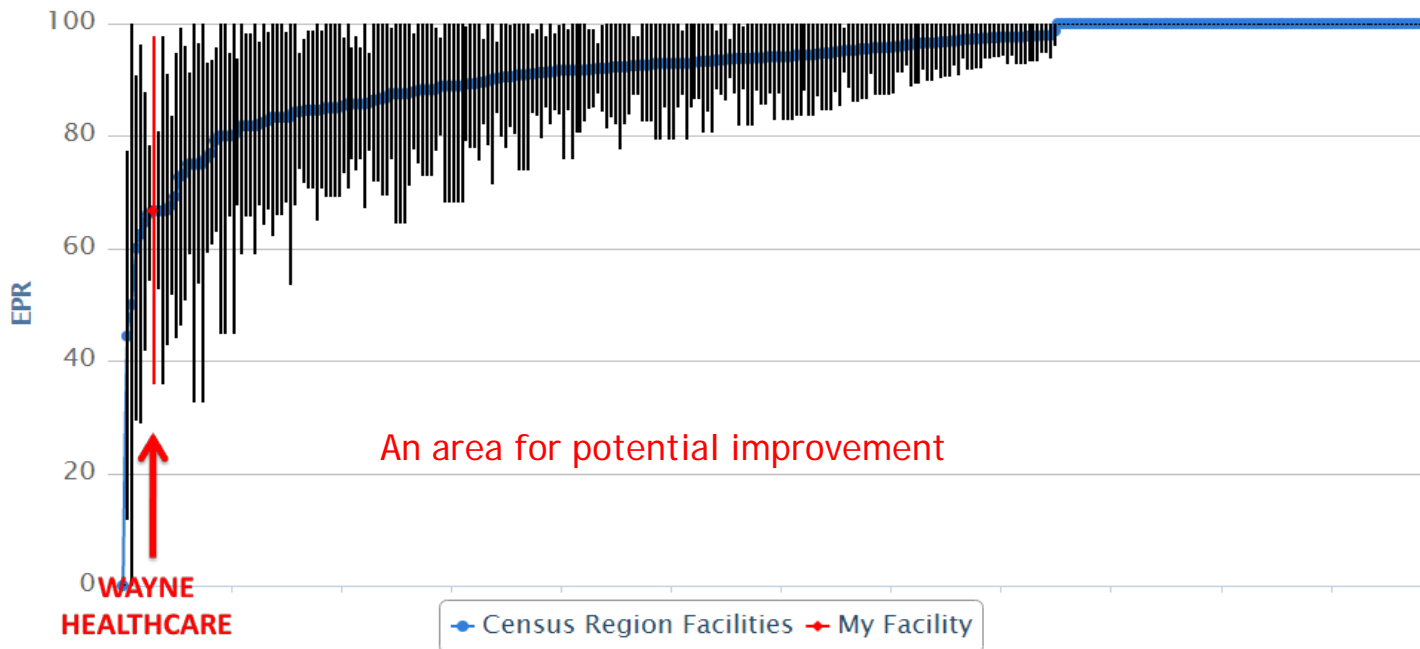
# COLON: Adjuvant chemotherapy for lymph node positive colon cancer



	My Program	My State (OH)	My Census Region (East North Central)	My ACS Division (East Central)	My CoC Program Type (CCP)	All CoC Programs
<b>Performance Rate</b>	100 %	92.2 %	92.3 %	91.6 %	88.5 %	88.8 %
<b>Denominator</b>	1	513	1763	982	1074	9794
<b>95 % CI</b>	(100.0,100.0)	(89.9,94.5)	(91.1,93.5)	(89.9,93.3)	(86.6,90.4)	(88.2,89.4)

Adjuvant chemotherapy is recommended or administered within 4 months (120 days) of diagnosis for patients under the age of 80 with AJCC Stage III (lymph node positive) colon cancer. (CP3R data as of 02/15/2018)

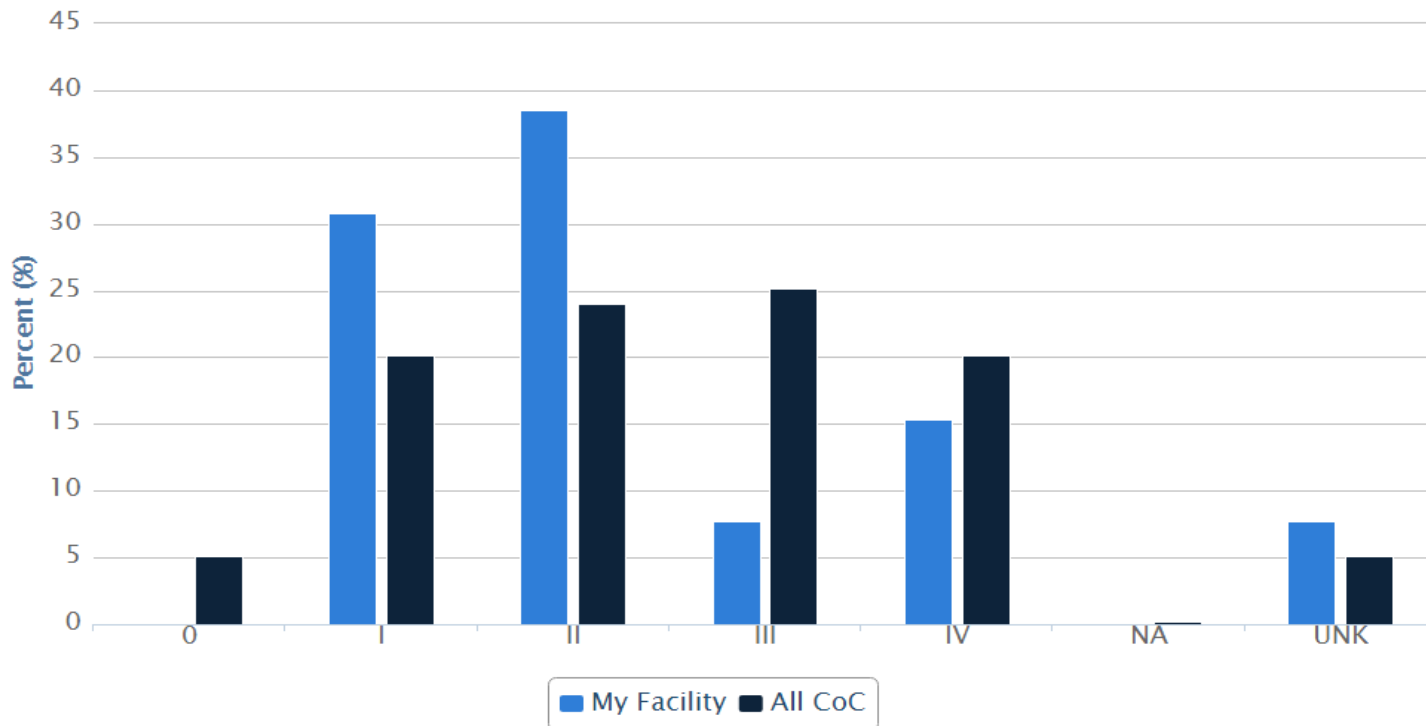
# COLON: At least 12 regional lymph nodes removed and pathologically examined for resected colon cancer



	My Program	My State (OH)	My Census Region (East North Central)	My ACS Division (East Central)	My CoC Program Type (CCP)	All CoC Programs
Performance Rate	66.7 %	92.8 %	92.8 %	92.7 %	89.7 %	92.2 %
Denominator	9	2061	7192	4080	4307	39174
95 % CI	(35.9,97.5)	(91.7,93.9)	(92.2,93.4)	(91.9,93.5)	(88.8,90.6)	(91.9,92.5)

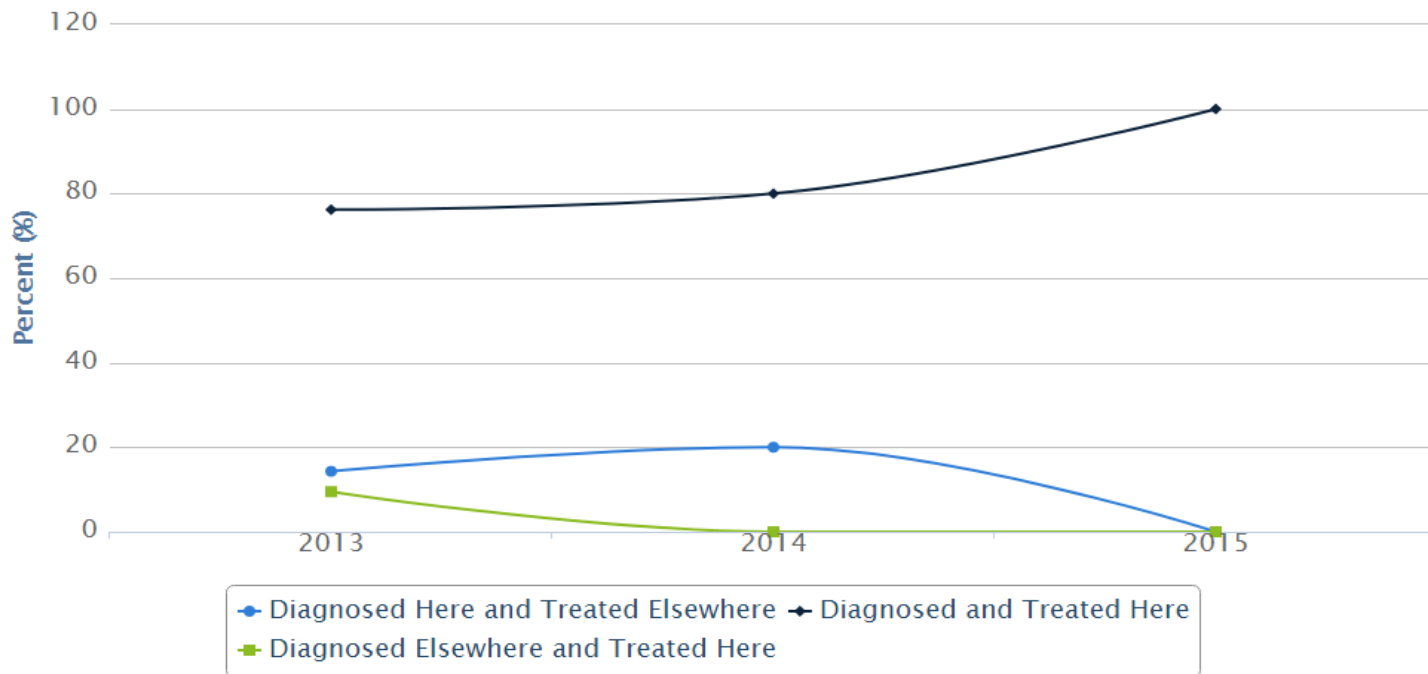
At least 12 regional lymph nodes are removed and pathologically examined for resected colon cancer. (CP3R data as of 02/15/2018)

## Stage Distribution - Colon Cancer Diagnosed My Facility vs. All CoC



	0	I	II	III	IV	NA	UNK
<b>My Facility</b>	0 % (n=0)	30.8 % (n=4)	38.5 % (n=5)	7.7 % (n=1)	15.4 % (n=2)	0 % (n=0)	7.7 % (n=1)
<b>All CoC</b>	5.1 % (n=3464)	20.1 % (n=13704)	24 % (n=16397)	25.2 % (n=17198)	20.2 % (n=13797)	0.2 % (n=124)	5.1 % (n=3499)

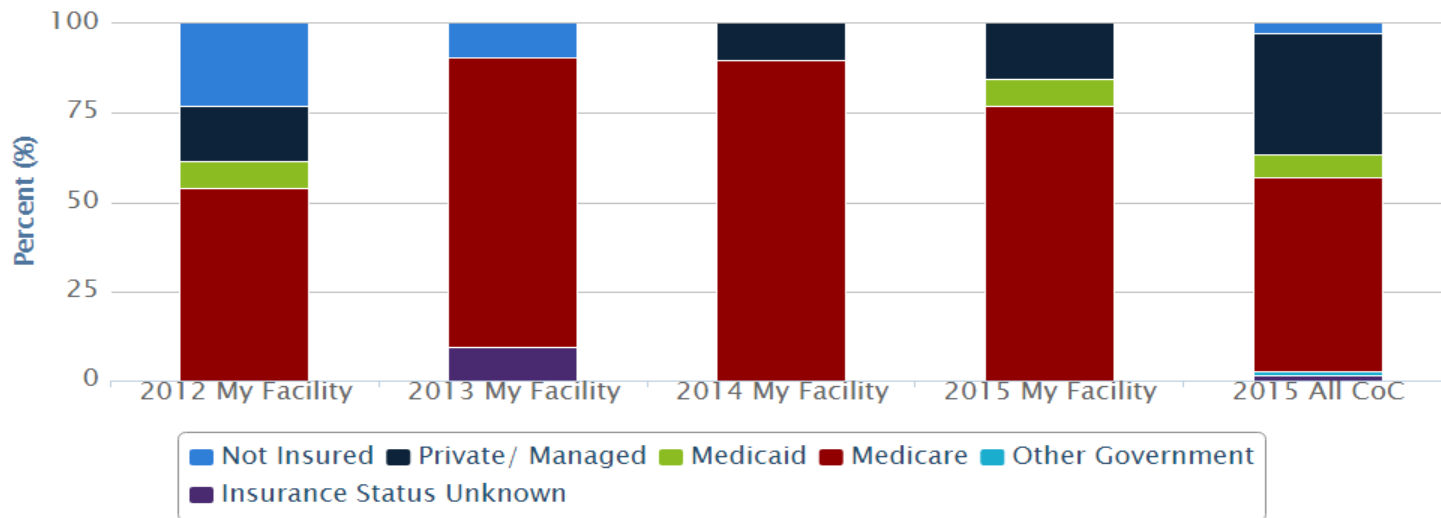
# In/Out Migration Colon Cancer My Facility



	2013	2014	2015
<b>Diagnosed Here and Treated Elsewhere</b>	14.3 % (n=3)	20 % (n=2)	0 % (n=0)
<b>Diagnosed and Treated Here</b>	76.2 % (n=16)	80 % (n=8)	100 % (n=13)
<b>Diagnosed Elsewhere and Treated Here</b>	9.5 % (n=2)	0 % (n=0)	0 % (n=0)

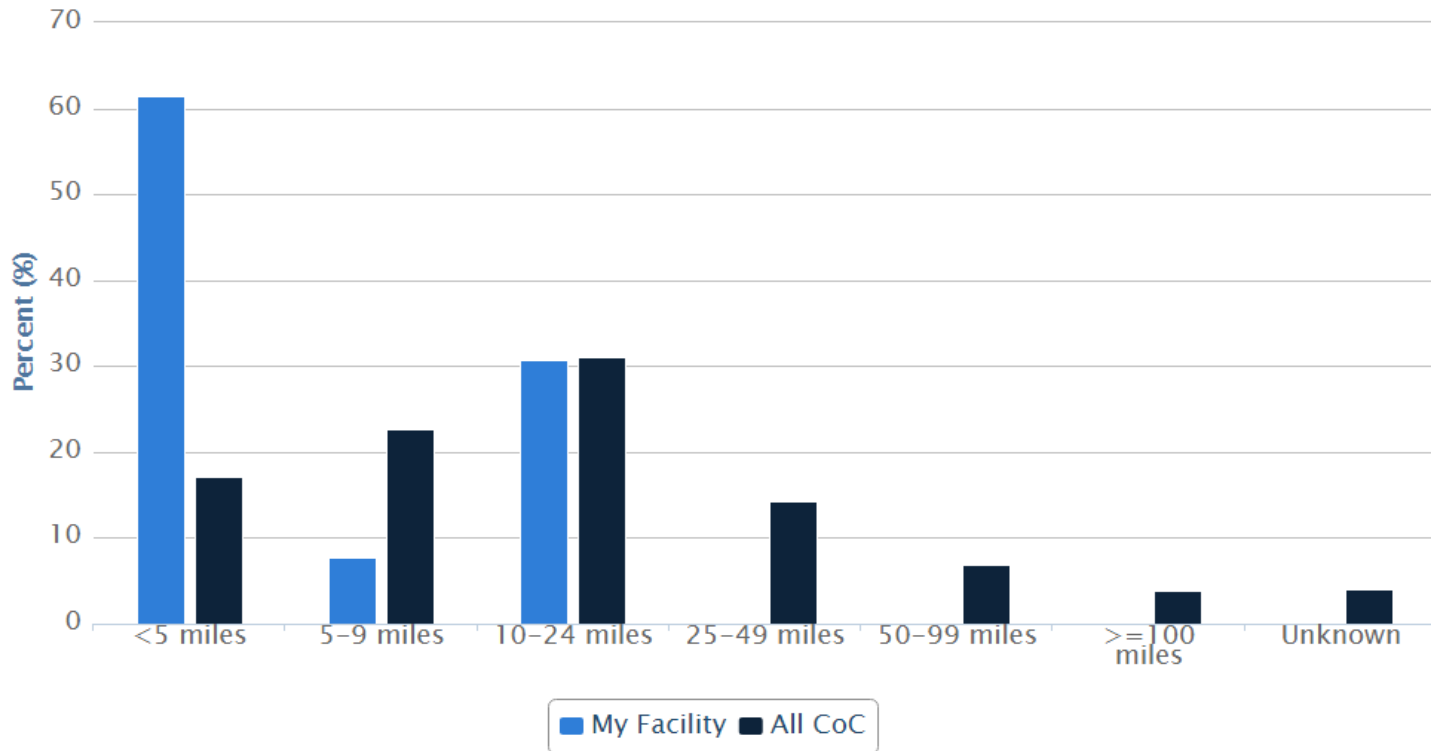
# Insurance Status - Colon Cancer, 2012 - 2015

## My Facility vs. All CoC



	2012 My Facility	2013 My Facility	2014 My Facility	2015 My Facility	2015 All CoC
<b>Not Insured</b>	23.1 % (n=3)	9.5 % (n=2)	0 % (n=0)	0 % (n=0)	2.7 % (n=1834)
<b>Private/ Managed</b>	15.4 % (n=2)	0 % (n=0)	10 % (n=1)	15.4 % (n=2)	33.9 % (n=23134)
<b>Medicaid</b>	7.7 % (n=1)	0 % (n=0)	0 % (n=0)	7.7 % (n=1)	6.6 % (n=4496)
<b>Medicare</b>	53.8 % (n=7)	81 % (n=17)	90 % (n=9)	76.9 % (n=10)	54.2 % (n=36952)
<b>Other Government</b>	0 % (n=0)	0 % (n=0)	0 % (n=0)	0 % (n=0)	1.1 % (n=749)
<b>Insurance Status Unknown</b>	0 % (n=0)	9.5 % (n=2)	0 % (n=0)	0 % (n=0)	1.5 % (n=1018)

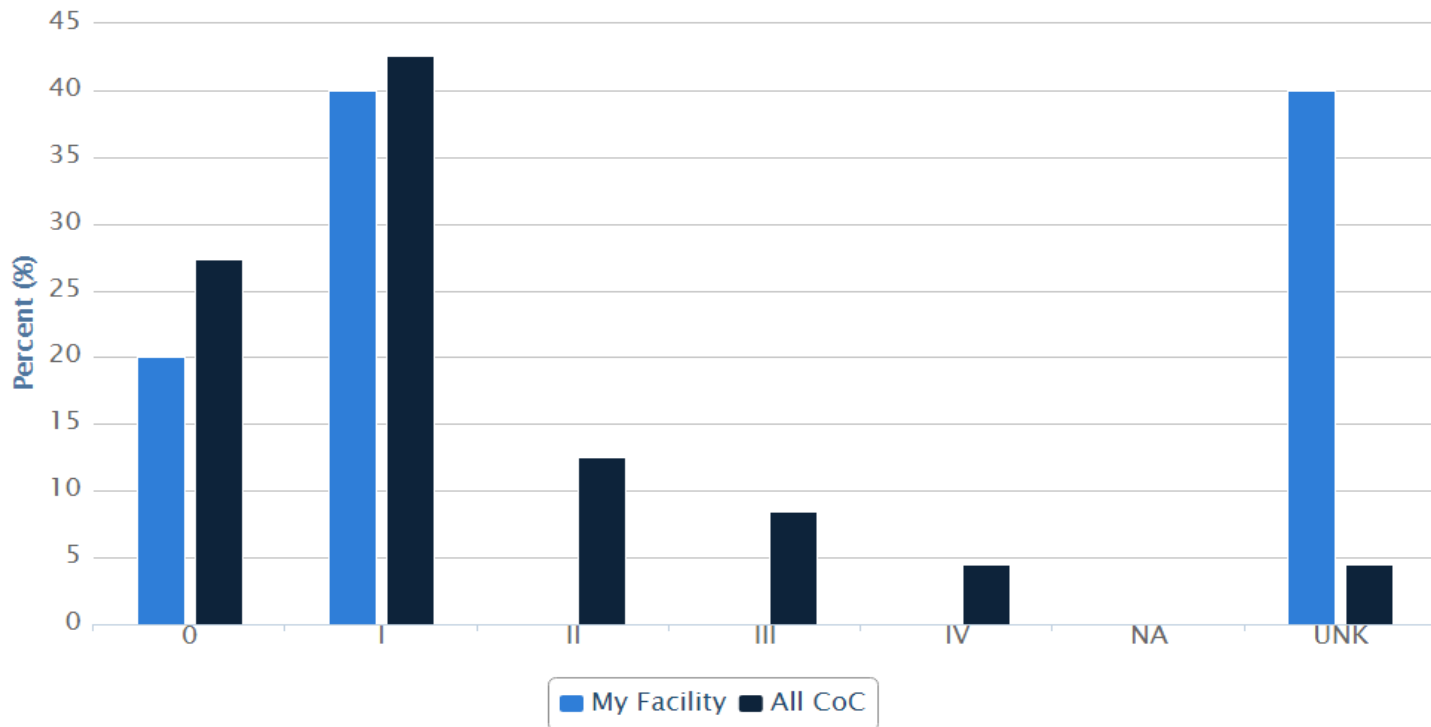
# Distance Traveled - Colon Cancer - My Facility



	<5 miles	5-9 miles	10-24 miles	25-49 miles	50-99 miles	>=100 miles	Unknown
My Facility	61.5 % (n=8)	7.7 % (n=1)	30.8 % (n=4)	0 % (n=0)	0 % (n=0)	0 % (n=0)	0 % (n=0)
All CoC	17.1 % (n=11646)	22.6 % (n=15430)	31.1 % (n=21218)	14.3 % (n=9743)	6.9 % (n=4698)	3.8 % (n=2625)	4.1 % (n=2823)

# Quality Measure Reports Melanoma

# Stage Distribution - Melanoma Cancer Diagnosed My Facility vs. All CoC

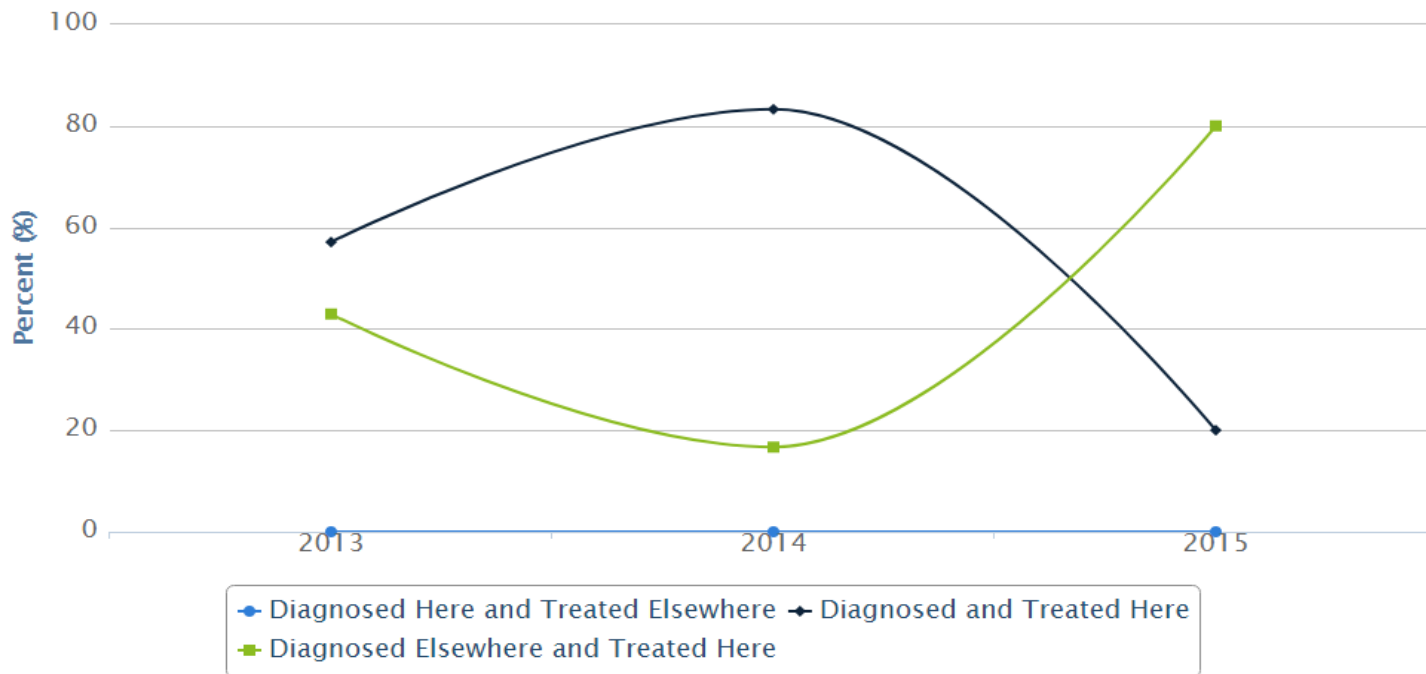


	0	I	II	III	IV	NA	UNK
<b>My Facility</b>	20 % (n=1)	40 % (n=2)	0 % (n=0)	0 % (n=0)	0 % (n=0)	0 % (n=0)	40 % (n=2)
<b>All CoC</b>	27.4 % (n=14854)	42.6 % (n=23108)	12.5 % (n=6765)	8.5 % (n=4628)	4.5 % (n=2442)	0 % (n=3)	4.5 % (n=2457)



# In/Out Migration Melanoma Cancer, 2013 - 2015

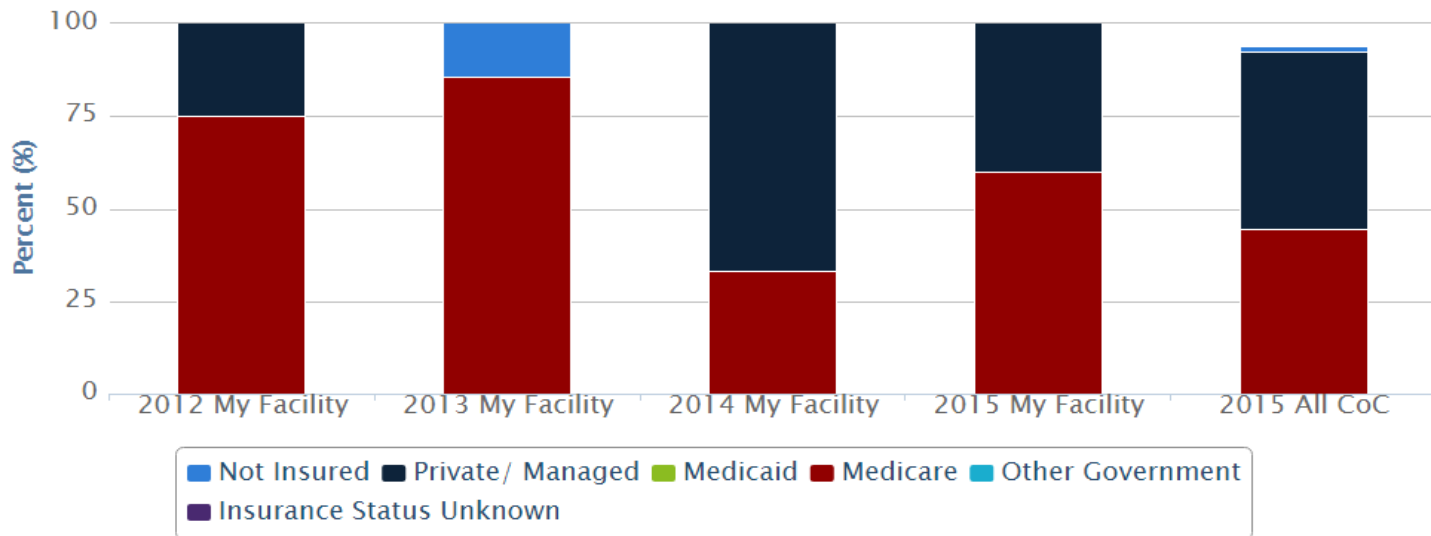
## My Facility



	2013	2014	2015
<b>Diagnosed Here and Treated Elsewhere</b>	0 % (n=0)	0 % (n=0)	0 % (n=0)
<b>Diagnosed and Treated Here</b>	57.1 % (n=4)	83.3 % (n=5)	20 % (n=1)
<b>Diagnosed Elsewhere and Treated Here</b>	42.9 % (n=3)	16.7 % (n=1)	80 % (n=4)

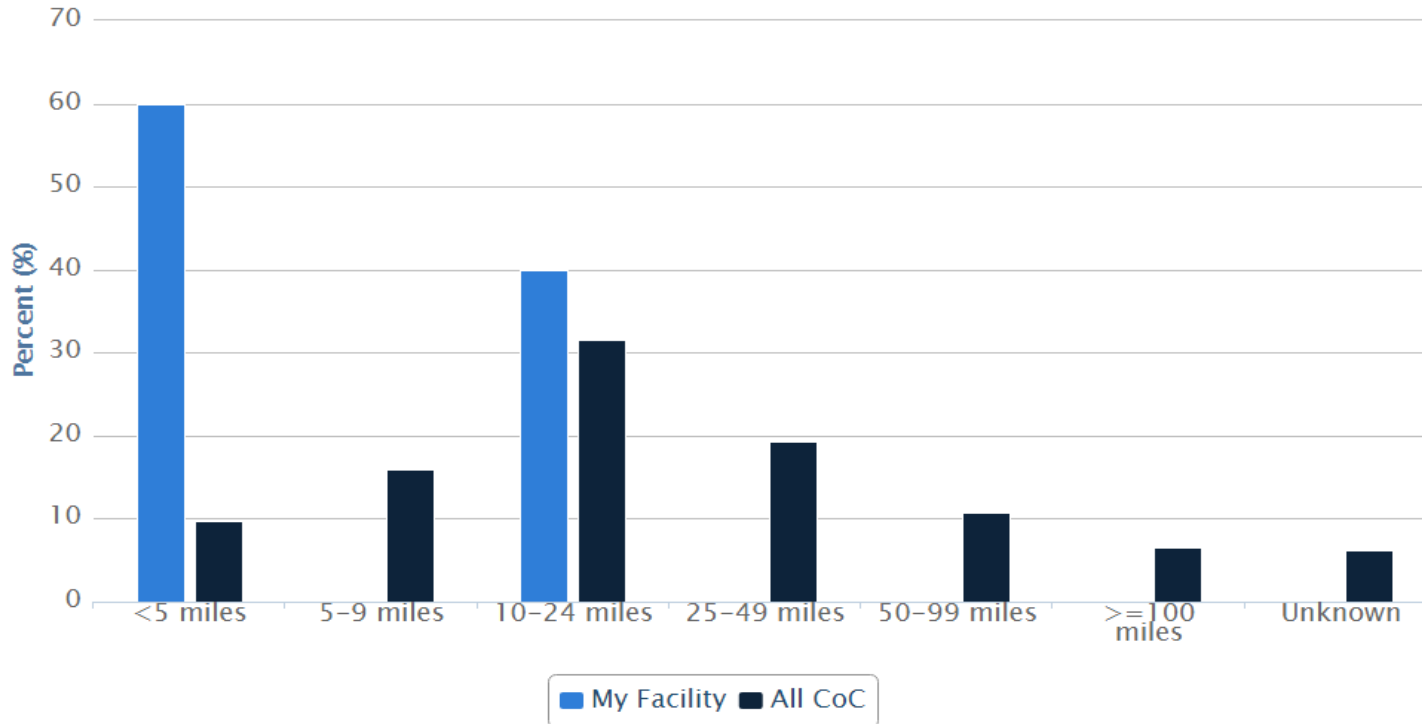
# Insurance Status - Melanoma Cancer, 2012 - 2015

## My Facility vs. All CoC



	2012 My Facility	2013 My Facility	2014 My Facility	2015 My Facility	2015 All CoC
<b>Not Insured</b>	0 % (n=0)	14.3 % (n=1)	0 % (n=0)	0 % (n=0)	1.4 % (n=743)
<b>Private/ Managed</b>	25 % (n=1)	0 % (n=0)	66.7 % (n=4)	40 % (n=2)	47.9 % (n=25987)
<b>Medicaid</b>	0 % (n=0)	0 % (n=0)	0 % (n=0)	0 % (n=0)	0 % (n=0)
<b>Medicare</b>	75 % (n=3)	85.7 % (n=6)	33.3 % (n=2)	60 % (n=3)	44.5 % (n=24148)
<b>Other Government</b>	0 % (n=0)	0 % (n=0)	0 % (n=0)	0 % (n=0)	0 % (n=0)
<b>Insurance Status Unknown</b>	0 % (n=0)	0 % (n=0)	0 % (n=0)	0 % (n=0)	0 % (n=0)

## Distance Traveled - Melanoma Cancer My Facility



	<5 miles	5-9 miles	10-24 miles	25-49 miles	50-99 miles	>=100 miles	Unknown
<b>My Facility</b>	60 % (n=3)	0 % (n=0)	40 % (n=2)	0 % (n=0)	0 % (n=0)	0 % (n=0)	0 % (n=0)
<b>All CoC</b>	9.7 % (n=5240)	16 % (n=8687)	31.6 % (n=17159)	19.3 % (n=10479)	10.7 % (n=5789)	6.6 % (n=3566)	6.2 % (n=3337)

**Wayne HealthCare  
Cancer Program Update  
05/15/2019**

**SUMMARY**

- **Amazing support from the hospital staff, administration, board and the community for developing the cancer program**
- **Our ultimate goal has been to:**

**“Provide High Quality Cancer Care Close to Home”**